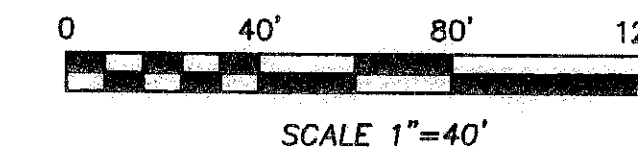
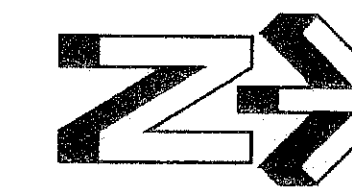


WATERFORD CROSSINGS M.U.P.D.

BEING A REPLAT OF A PORTION OF PALM BEACH FARMS CO. PLAT NO. 9 AS RECORDED IN PLAT BOOK 5, PAGE 58, AND BEING A REPLAT OF PARCELS 4 AND 5 OF WATERFORD CROSSINGS A P.C.D., AS RECORDED IN PLAT BOOK 66, PAGE 118, IN SECTIONS 27 AND 28, TOWNSHIP 43 SOUTH, RANGE 42 EAST, PALM BEACH COUNTY, FLORIDA

MARCH, 2007



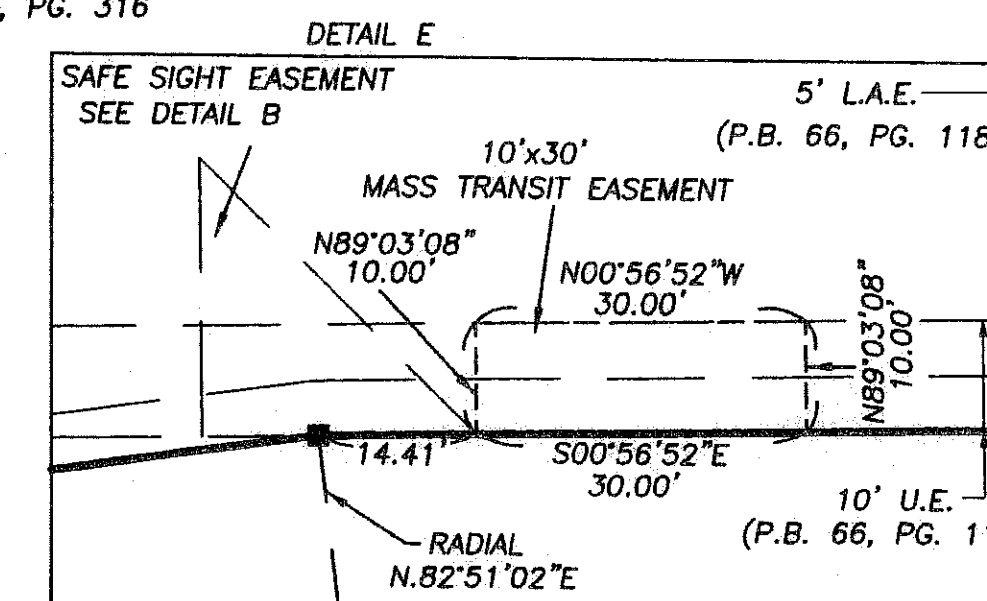
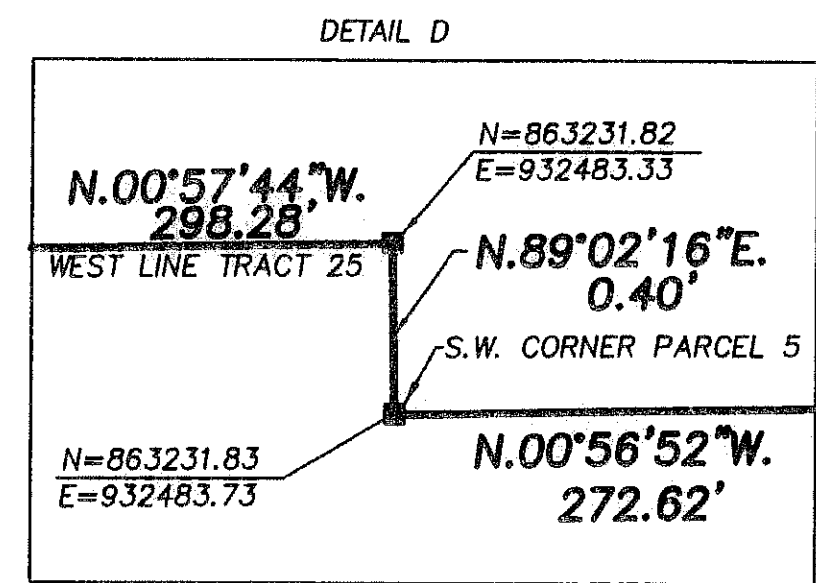
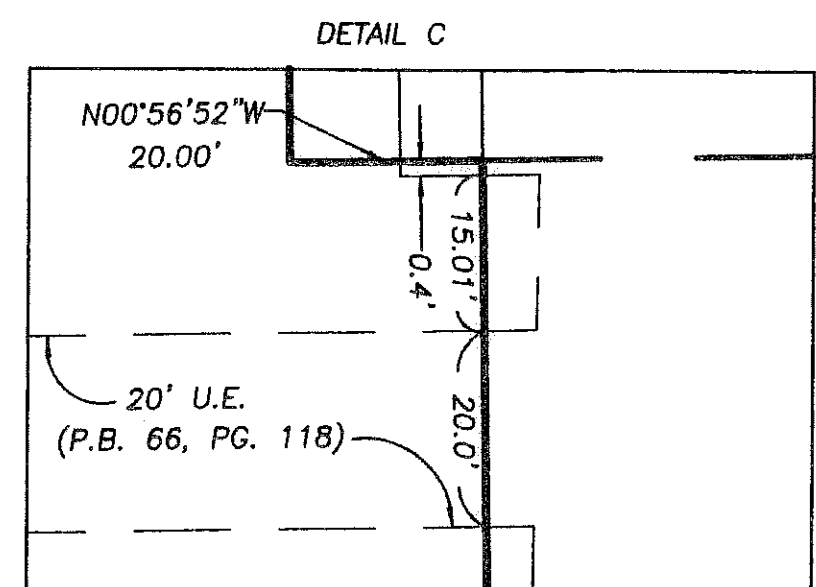
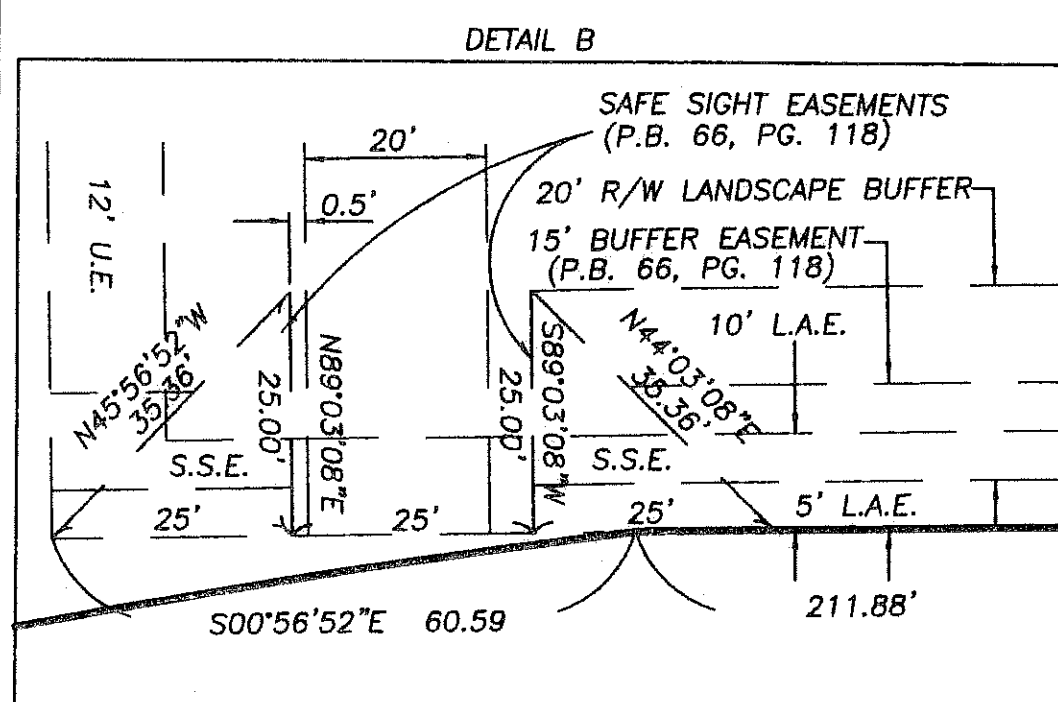
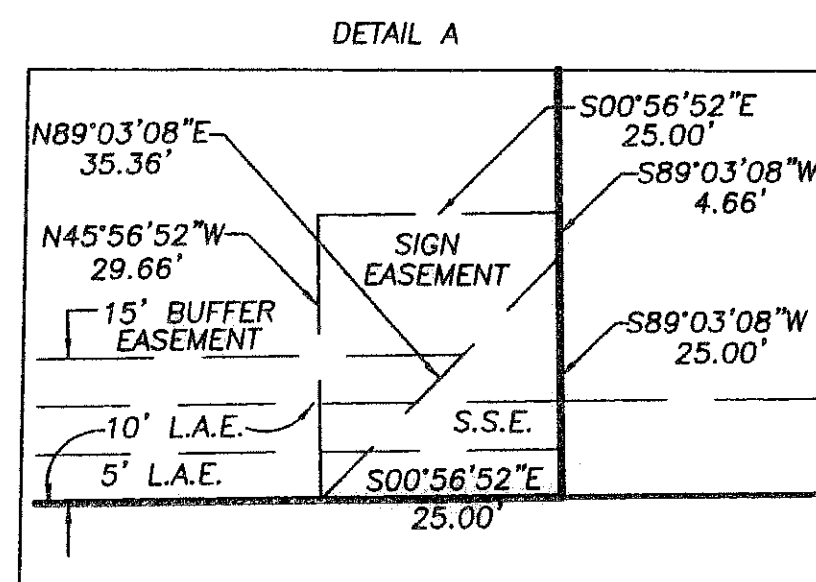
SHEET 3 OF 3

112

WOOD LAKE APARTMENTS
(P.B. 80, PG. 66)

PALM BEACH ACURA
(P.B. 98, PG. 184)

TRACT 24
(P.B. 5, PG. 58)



ABBREVIATIONS AND SYMBOLS

1. ——— = Denotes Set Permanent Reference Monuments (P.R.M.'s), Stamped P.R.M. L.S. # 3357.
2. C = Centerline.
3. RW = Right of Way.
4. P.B. = Plat Book.
5. P.G.(S) = Pages.
6. SEC. = Section.
7. TWP. = Township.
8. RGE. = Range.
9. U.E. = Utility Easement.
10. D.E. = Drainage Easement.
11. D.B. = Deed Book.
12. A = Arc Length.
13. Δ = Central Angle.
14. R = Radius.
15. C.B. = Chord Bearing.
16. O.R.B. = Official Record Book.
17. R.P.B. = Road Plat Book.
18. L.A.E. = Limited Access Easement.
19. P.O.C. = Point of Commencement.
20. P.O.B. = Point of Beginning.
21. P.B.C. = Palm Beach County.
22. F.N.D. = Found.
23. ESMT = Easement.
24. Wly = Westerly.
25. F.P.L. = Florida Power and Light.
26. S.S.E. = Safe Sight Easement.
27. N = Northing.
28. E = Easting.

LINE	BEARING	DISTANCE
L1	S 73°02'09" W	5.00'
L2	S 73°02'09" W	5.00'
L3	S 77°46'00" W	40.23'
L4	N 12°14'00" W	20.00'
L5	S 77°46'00" W	6.34'
L6	N 37°11'39" E	39.74'
L7	S 64°07'38" W	10.90'
L8	N 80°39'41" E	70.92'
L9	N 00°56'23" W	24.23'
L10	S 89°03'37" W	20.00'
L11	N 00°56'23" W	6.97'
L12	S 80°39'41" W	56.56'
L13	N 64°07'38" E	18.60'
L14	S 37°11'39" W	53.31'
L15	N 15°12'04" W	9.49'
L16	S 77°46'00" W	15.29'

BEARING ROTATION EQUATION:
 S88°45'24"E (PLAT BEARING)
 S88°45'31"E (GRID BEARING)
 00°00'07" = COUNTER CLOCKWISE BEARING ROTATION (PLAT TO GRID)

SUBDIVISION: Waterford Crossings
 BOOK: 112
 PAGE: 112
 BLOCK: 112
 QUAD: 46
 ZONE: 1804
 MAP: HUPD
 YEAR: 53-4-11
 FEEDNAME

WATERFORD CROSSINGS M.U.P.D.

WALLACE SURVYING
 CORP. LICENSED SURVEYOR # 406
 9543 VILLAGE BOULEVARD, WEST PALM BEACH, FLORIDA 33407 • (561) 845-4551

FIELD:	JOB NO: 99-1001H	P.B.:	PG.
OFFICE: K.S.	DATE: MARCH, 2007	DWG. NO: 99-1001-7	
CYD: C.W.	REF: 99-10017.DWG	SHEET 3	OF 3